

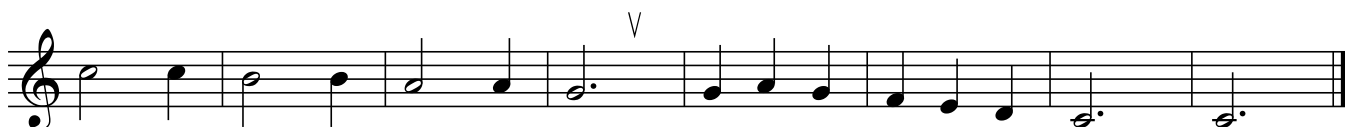
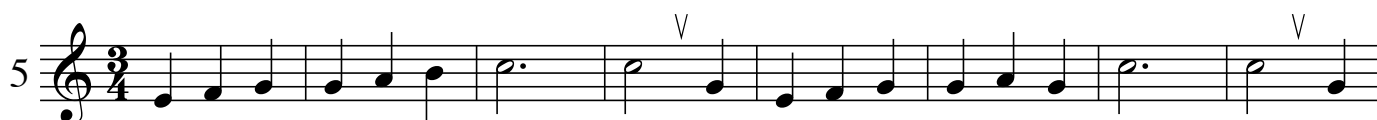
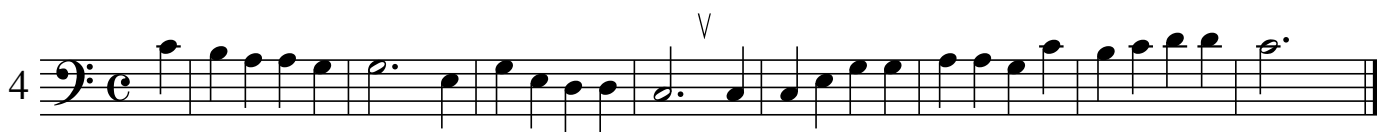
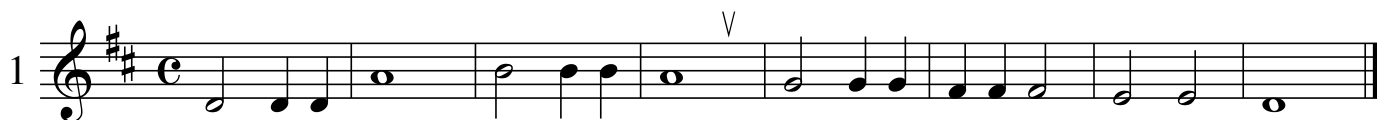
# Melodiensammlung II

## Diatonische Melodien in Dur und Moll

Quellen:

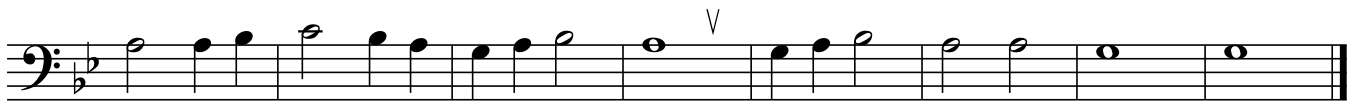
1. "The Folk Song Sight Singing Series" (frei bearbeitet)

2. Melodien nach Motiven von W. A. Mozart, J. Haydn, F. Schubert und L. van Beethoven.



6 

7 



8 



9 



10 

11 

12 



13 



14 



15 



16

Musical notation for measures 16-17 in bass clef, key of D major (two sharps), 6/8 time signature. Measure 16 contains six eighth notes: D4, E4, F#4, G4, A4, B4. Measure 17 contains six eighth notes: C5, B4, A4, G4, F#4, E4. A 'V' (accusative) is placed above the G4 note in measure 17.

17

Musical notation for measures 17-18 in treble clef, key of D major (two sharps), 3/4 time signature. Measure 17 contains four quarter notes: D4, E4, F#4, G4. Measure 18 contains four quarter notes: A4, B4, C5, B4. A 'V' (accusative) is placed above the B4 note in measure 18.

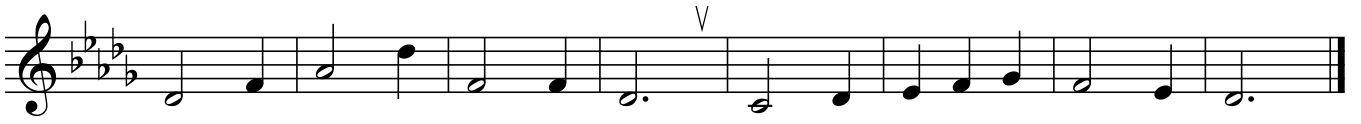
18

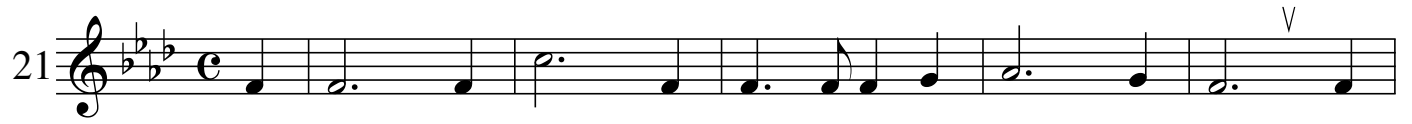
Musical notation for measures 18-19 in treble clef, key of D major (two sharps), common time signature. Measure 18 contains four quarter notes: D4, E4, F#4, G4. Measure 19 contains four quarter notes: A4, B4, C5, B4. A 'V' (accusative) is placed above the B4 note in measure 19.

19

Musical notation for measures 19-20 in treble clef, key of D major (two sharps), 3/4 time signature. Measure 19 contains four quarter notes: D4, E4, F#4, G4. Measure 20 contains four quarter notes: A4, B4, C5, B4. A 'V' (accusative) is placed above the B4 note in measure 20.

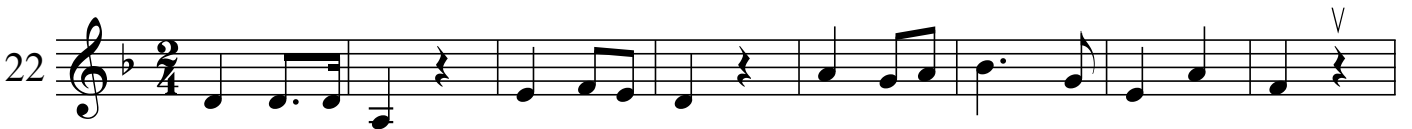
20  Musical staff 20, measure 1. Treble clef, key signature of three flats (B-flat, E-flat, A-flat), 3/4 time signature. The melody consists of quarter notes: C4, D4, E4, F4, G4, A4, B4, C5, B4, A4, G4, F4, E4, D4, C4. There are two 'V' markings above the staff, one above the G4 note and one above the final C4 note.

 Musical staff 20, measure 2. Treble clef, key signature of three flats, 3/4 time signature. The melody consists of quarter notes: C4, D4, E4, F4, G4, A4, B4, C5, B4, A4, G4, F4, E4, D4, C4. There is a 'V' marking above the G4 note.

21  Musical staff 21, measure 1. Treble clef, key signature of three flats, common time signature. The melody consists of quarter notes: C4, D4, E4, F4, G4, A4, B4, C5, B4, A4, G4, F4, E4, D4, C4. There is a 'V' marking above the final C4 note.

 Musical staff 21, measure 2. Treble clef, key signature of three flats, common time signature. The melody consists of quarter notes: C4, D4, E4, F4, G4, A4, B4, C5, B4, A4, G4, F4, E4, D4, C4. There is a 'V' marking above the G4 note.

 Musical staff 21, measure 3. Treble clef, key signature of three flats, common time signature. The melody consists of quarter notes: C4, D4, E4, F4, G4, A4, B4, C5, B4, A4, G4, F4, E4, D4, C4. There is a 'V' marking above the G4 note.


22  Musical staff 22, measure 1. Treble clef, key signature of three flats, 2/4 time signature. The melody consists of quarter notes: C4, D4, E4, F4, G4, A4, B4, C5, B4, A4, G4, F4, E4, D4, C4. There is a 'V' marking above the final C4 note.

 Musical staff 22, measure 2. Treble clef, key signature of three flats, 2/4 time signature. The melody consists of quarter notes: C4, D4, E4, F4, G4, A4, B4, C5, B4, A4, G4, F4, E4, D4, C4. There is a 'V' marking above the final C4 note.

23  Musical staff 23, measure 1. Treble clef, key signature of one sharp (F-sharp), 3/4 time signature. The melody consists of quarter notes: C4, D4, E4, F4, G4, A4, B4, C5, B4, A4, G4, F4, E4, D4, C4. There is a 'V' marking above the final C4 note.

 Musical staff 23, measure 2. Treble clef, key signature of one sharp, 3/4 time signature. The melody consists of quarter notes: C4, D4, E4, F4, G4, A4, B4, C5, B4, A4, G4, F4, E4, D4, C4. There is a 'V' marking above the final C4 note.

24  Musical staff 24, measure 1. Bass clef, key signature of three sharps (F#, C#, G#), 3/4 time signature. The staff contains a sequence of notes: G2, A2, B2, C3, D3, E3, F#3, G#3, A3, B3, C4, D4, E4, F#4, G#4, A4, B4, C5. There are two 'V' markings above the staff, one above the G#4 note and one above the A4 note.

 Musical staff 24, measure 2. Bass clef, key signature of three sharps, 3/4 time signature. The staff contains a sequence of notes: G#3, A3, B3, C4, D4, E4, F#4, G#4, A4, B4, C5, D5, E5, F#5, G#5, A5, B5, C6. There is a 'V' marking above the G#4 note.

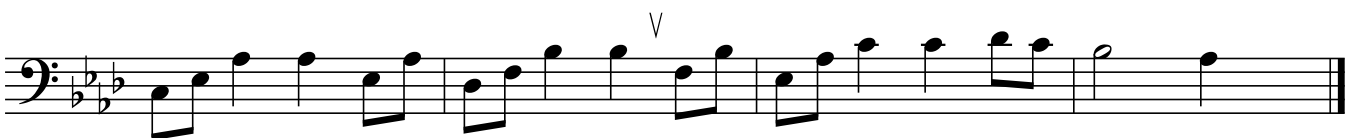
25  Musical staff 25, measure 1. Bass clef, key signature of three sharps, 3/4 time signature. The staff contains a sequence of notes: G2, A2, B2, C3, D3, E3, F#3, G#3, A3, B3, C4, D4, E4, F#4, G#4, A4, B4, C5. There is a 'V' marking above the G#4 note.

 Musical staff 25, measure 2. Bass clef, key signature of three sharps, 3/4 time signature. The staff contains a sequence of notes: G#3, A3, B3, C4, D4, E4, F#4, G#4, A4, B4, C5, D5, E5, F#5, G#5, A5, B5, C6.

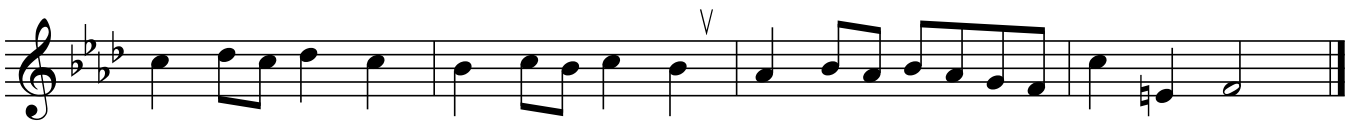
 Musical staff 25, measure 3. Bass clef, key signature of three sharps, 3/4 time signature. The staff contains a sequence of notes: G#3, A3, B3, C4, D4, E4, F#4, G#4, A4, B4, C5, D5, E5, F#5, G#5, A5, B5, C6. There is a 'V' marking above the G#4 note.

26  Musical staff 26, measure 1. Bass clef, key signature of two flats (Bb, Eb), 3/4 time signature. The staff contains a sequence of notes: G1, A1, B1, C2, D2, E2, F2, G2, A2, B2, C3, D3, E3, F#3, G#3, A3, B3, C4. There is a 'V' marking above the G#3 note.

27  Musical staff 27, measure 1. Bass clef, key signature of two flats, common time signature. The staff contains a sequence of notes: G1, A1, B1, C2, D2, E2, F2, G2, A2, B2, C3, D3, E3, F#3, G#3, A3, B3, C4. There is a 'V' marking above the G#3 note.

 Musical staff 27, measure 2. Bass clef, key signature of two flats, common time signature. The staff contains a sequence of notes: G#3, A3, B3, C4, D4, E4, F#4, G#4, A4, B4, C5, D5, E5, F#5, G#5, A5, B5, C6. There is a 'V' marking above the G#4 note.

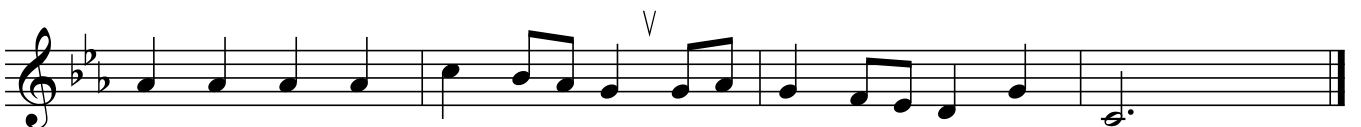
28  Musical staff 28, measure 1. Treble clef, key signature of three flats (B-flat, E-flat, A-flat), common time signature. The staff contains a sequence of eighth notes: B-flat, C, D, E-flat, F, G, A-flat, B-flat. A fermata is placed over the final note, B-flat.

 Musical staff 28, measure 2. Treble clef, key signature of three flats, common time. The staff contains a sequence of eighth notes: B-flat, C, D, E-flat, F, G, A-flat, B-flat. A fermata is placed over the final note, B-flat.

29  Musical staff 29, measure 1. Treble clef, key signature of three sharps (F-sharp, C-sharp, G-sharp), 2/4 time signature. The staff contains a sequence of eighth notes: F-sharp, G-sharp, A, B, C, D, E, F-sharp. A fermata is placed over the final note, F-sharp.

 Musical staff 29, measure 2. Treble clef, key signature of three sharps, 2/4 time. The staff contains a sequence of eighth notes: F-sharp, G-sharp, A, B, C, D, E, F-sharp. A fermata is placed over the final note, F-sharp.

30  Musical staff 30, measure 1. Treble clef, key signature of three flats, common time. The staff contains a sequence of eighth notes: B-flat, C, D, E-flat, F, G, A-flat, B-flat. A fermata is placed over the final note, B-flat.

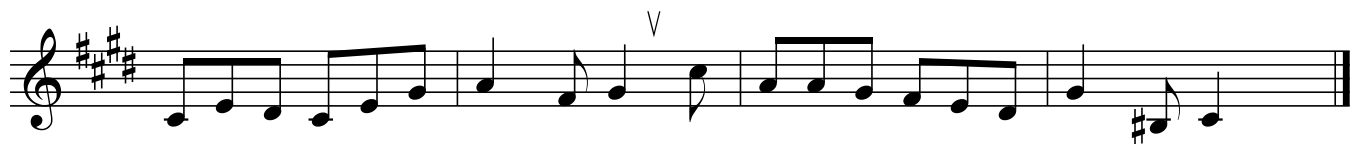
 Musical staff 30, measure 2. Treble clef, key signature of three flats, common time. The staff contains a sequence of eighth notes: B-flat, C, D, E-flat, F, G, A-flat, B-flat. A fermata is placed over the final note, B-flat.

31  Musical staff 31, measure 1. Treble clef, key signature of one sharp (F-sharp), common time. The staff contains a sequence of eighth notes: F-sharp, G, A, B, C, D, E, F-sharp. A fermata is placed over the final note, F-sharp.

 Musical staff 31, measure 2. Treble clef, key signature of one sharp, common time. The staff contains a sequence of eighth notes: F-sharp, G, A, B, C, D, E, F-sharp. A fermata is placed over the final note, F-sharp.

 Musical staff 31, measure 3. Treble clef, key signature of one sharp, common time. The staff contains a sequence of eighth notes: F-sharp, G, A, B, C, D, E, F-sharp. A fermata is placed over the final note, F-sharp.

32 



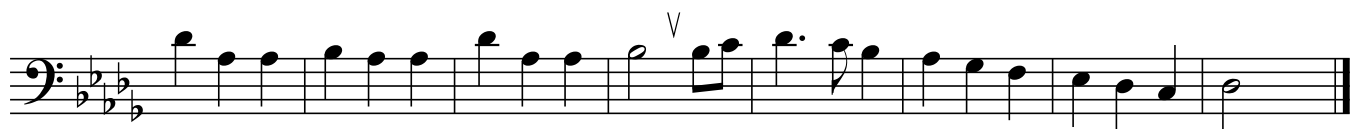
33 



34 



35 





36 Musical staff 36, measure 1. Treble clef, key signature of one sharp (F#), 3/4 time signature. The melody begins with a quarter note C4, followed by a quarter note D4, and a quarter note E4. The next two measures contain eighth notes: F#4, G4, A4, B4, C5, D5, E5, F#5, G5, A5, B5, C6. The third measure has a fermata over the C6 note, with a 'V' above it. The fourth measure has a fermata over the C5 note, with a 'V' above it. The staff ends with a double bar line.

Musical staff 36, measure 2. Treble clef, key signature of one sharp (F#), 3/4 time signature. The melody continues with a quarter note G4, followed by a quarter note A4, and a quarter note B4. The next two measures contain eighth notes: C5, B4, A4, G4, F#4, E4, D4, C4. The third measure has a fermata over the C4 note, with a 'V' above it. The staff ends with a double bar line.

37 Musical staff 37, measure 1. Treble clef, key signature of one sharp (F#), 3/4 time signature. The melody begins with a quarter note C4, followed by a quarter note D4, and a quarter note E4. The next two measures contain eighth notes: F#4, G4, A4, B4, C5, D5, E5, F#5, G5, A5, B5, C6. The third measure has a fermata over the C6 note, with a 'V' above it. The fourth measure has a fermata over the C5 note, with a 'V' above it. The staff ends with a double bar line.

38 Musical staff 38, measure 1. Treble clef, key signature of three flats (Bb, Eb, Ab), 6/8 time signature. The melody begins with a quarter note C4, followed by a quarter note D4, and a quarter note E4. The next two measures contain eighth notes: F#4, G4, A4, B4, C5, D5, E5, F#5, G5, A5, B5, C6. The third measure has a fermata over the C6 note, with a 'V' above it. The fourth measure has a fermata over the C5 note, with a 'V' above it. The staff ends with a double bar line.

Musical staff 38, measure 2. Treble clef, key signature of three flats (Bb, Eb, Ab), 6/8 time signature. The melody continues with a quarter note G4, followed by a quarter note A4, and a quarter note B4. The next two measures contain eighth notes: C5, B4, A4, G4, F#4, E4, D4, C4. The third measure has a fermata over the C4 note, with a 'V' above it. The staff ends with a double bar line.

39 Musical staff 39, measure 1. Treble clef, key signature of two sharps (F#, C#), 6/8 time signature. The melody begins with a quarter note C4, followed by a quarter note D4, and a quarter note E4. The next two measures contain eighth notes: F#4, G4, A4, B4, C5, D5, E5, F#5, G5, A5, B5, C6. The third measure has a fermata over the C6 note, with a 'V' above it. The fourth measure has a fermata over the C5 note, with a 'V' above it. The staff ends with a double bar line.

Musical staff 39, measure 2. Treble clef, key signature of two sharps (F#, C#), 6/8 time signature. The melody continues with a quarter note G4, followed by a quarter note A4, and a quarter note B4. The next two measures contain eighth notes: C5, B4, A4, G4, F#4, E4, D4, C4. The third measure has a fermata over the C4 note, with a 'V' above it. The staff ends with a double bar line.

Musical staff 39, measure 3. Treble clef, key signature of two sharps (F#, C#), 6/8 time signature. The melody begins with a quarter note C4, followed by a quarter note D4, and a quarter note E4. The next two measures contain eighth notes: F#4, G4, A4, B4, C5, D5, E5, F#5, G5, A5, B5, C6. The third measure has a fermata over the C6 note, with a 'V' above it. The fourth measure has a fermata over the C5 note, with a 'V' above it. The staff ends with a double bar line.

40 





41 



42 

43 



44

Two staves of music in bass clef. The first staff is in 6/8 time with a key signature of one flat. It contains measures 44 and 45. The second staff continues the melody from measure 45. Both staves feature a 'V' marking above the notes in measures 44 and 45.

45

Two staves of music in bass clef. The first staff is in 3/4 time with a key signature of three sharps. It contains measures 46 and 47. The second staff continues the melody from measure 47. Both staves feature a 'V' marking above the notes in measures 46 and 47.

46

Two staves of music in treble clef. The first staff is in common time with a key signature of three sharps. It contains measures 48 and 49. The second staff continues the melody from measure 49. Both staves feature a 'V' marking above the notes in measures 48 and 49.

47

One staff of music in treble clef, 3/4 time with a key signature of two flats. It contains measures 50 and 51. A 'V' marking is present above the notes in measure 50.

48

One staff of music in treble clef, 2/4 time with a key signature of one sharp. It contains measures 52 and 53. A 'V' marking is present above the notes in measure 52.

49 Musical staff 49, measure 1. Treble clef, key signature of one sharp (F#), 3/4 time signature. The melody begins with a quarter note on G4, followed by quarter notes on A4, B4, and C5. The next measure contains a half note on B4 and a quarter note on A4. The third measure has a quarter note on G4, a quarter note on F#4, and a quarter note on E4. The fourth measure consists of a half note on D4 and a quarter note on C4.

Musical staff 49, measure 2. Treble clef, key signature of one sharp (F#), 3/4 time signature. The melody continues with a quarter note on B4, a quarter note on A4, and a quarter note on G4. The next measure has a quarter note on F#4, a quarter note on E4, and a quarter note on D4. The third measure contains a half note on C4 and a quarter note on B3. The fourth measure has a quarter note on A3, a quarter note on G3, and a quarter note on F#3. The fifth measure consists of a half note on E3 and a quarter note on D3. The staff ends with a double bar line.

50 Musical staff 50, measure 1. Treble clef, key signature of two flats (Bb, Eb), common time signature. The melody begins with a quarter note on G3, followed by quarter notes on A3, Bb3, and C4. The next measure contains a quarter note on D4, a quarter note on E4, and a quarter note on F4. The third measure has a quarter note on G4, a quarter note on A4, and a quarter note on Bb4. The fourth measure consists of a half note on C5 and a quarter note on Bb4. The fifth measure has a quarter note on A4, a quarter note on G4, and a quarter note on F4. The sixth measure contains a quarter note on E4, a quarter note on D4, and a quarter note on C4. The seventh measure has a quarter note on Bb3, a quarter note on Ab3, and a quarter note on G3. The eighth measure consists of a half note on F3 and a quarter note on E3. The staff ends with a double bar line.

Musical staff 50, measure 2. Treble clef, key signature of two flats (Bb, Eb), common time signature. The melody continues with a quarter note on D3, a quarter note on C3, and a quarter note on B2. The next measure has a quarter note on Ab2, a quarter note on G2, and a quarter note on F2. The third measure contains a half note on E2 and a quarter note on D2. The fourth measure has a quarter note on C2, a quarter note on B1, and a quarter note on Ab1. The fifth measure consists of a half note on G1 and a quarter note on F1. The staff ends with a double bar line.

51 Musical staff 51, measure 1. Bass clef, key signature of two flats (Bb, Eb), common time signature. The melody begins with a quarter note on G2, followed by quarter notes on A2, Bb2, and C3. The next measure contains a quarter note on D3, a quarter note on E3, and a quarter note on F3. The third measure has a quarter note on G3, a quarter note on A3, and a quarter note on Bb3. The fourth measure consists of a half note on C4 and a quarter note on Bb3. The fifth measure has a quarter note on A3, a quarter note on G3, and a quarter note on F3. The sixth measure contains a quarter note on E3, a quarter note on D3, and a quarter note on C3. The seventh measure has a quarter note on Bb2, a quarter note on Ab2, and a quarter note on G2. The eighth measure consists of a half note on F2 and a quarter note on E2. The staff ends with a double bar line.

Musical staff 51, measure 2. Bass clef, key signature of two flats (Bb, Eb), common time signature. The melody continues with a quarter note on D2, a quarter note on C2, and a quarter note on B1. The next measure has a quarter note on Ab1, a quarter note on G1, and a quarter note on F1. The third measure contains a half note on E1 and a quarter note on D1. The fourth measure has a quarter note on C1, a quarter note on B0, and a quarter note on Ab0. The fifth measure consists of a half note on G0 and a quarter note on F0. The sixth measure has a quarter note on E0, a quarter note on D0, and a quarter note on C0. The seventh measure contains a quarter note on Bb0, a quarter note on Ab0, and a quarter note on G0. The eighth measure consists of a half note on F0 and a quarter note on E0. The staff ends with a double bar line.

Musical staff 51, measure 3. Bass clef, key signature of two flats (Bb, Eb), common time signature. The melody continues with a quarter note on D1, a quarter note on C1, and a quarter note on B0. The next measure has a quarter note on Ab0, a quarter note on G0, and a quarter note on F0. The third measure contains a half note on E0 and a quarter note on D0. The fourth measure has a quarter note on C0, a quarter note on Bb0, and a quarter note on Ab0. The fifth measure consists of a half note on G0 and a quarter note on F0. The sixth measure has a quarter note on E0, a quarter note on D0, and a quarter note on C0. The seventh measure contains a quarter note on Bb0, a quarter note on Ab0, and a quarter note on G0. The eighth measure consists of a half note on F0 and a quarter note on E0. The staff ends with a double bar line.

52 Musical staff 52, measure 1. Bass clef, key signature of two sharps (F#, C#), common time signature. The melody begins with a quarter note on G2, followed by quarter notes on A2, B2, and C3. The next measure contains a quarter note on D3, a quarter note on E3, and a quarter note on F3. The third measure has a quarter note on G3, a quarter note on A3, and a quarter note on B2. The fourth measure consists of a half note on C3 and a quarter note on B2. The fifth measure has a quarter note on A2, a quarter note on G2, and a quarter note on F2. The sixth measure contains a quarter note on E2, a quarter note on D2, and a quarter note on C2. The seventh measure has a quarter note on B1, a quarter note on Ab1, and a quarter note on G1. The eighth measure consists of a half note on F1 and a quarter note on E1. The staff ends with a double bar line.

Musical staff 52, measure 2. Bass clef, key signature of two sharps (F#, C#), common time signature. The melody continues with a quarter note on D1, a quarter note on C1, and a quarter note on B0. The next measure has a quarter note on Ab0, a quarter note on G0, and a quarter note on F0. The third measure contains a half note on E0 and a quarter note on D0. The fourth measure has a quarter note on C0, a quarter note on Bb0, and a quarter note on Ab0. The fifth measure consists of a half note on G0 and a quarter note on F0. The sixth measure has a quarter note on E0, a quarter note on D0, and a quarter note on C0. The seventh measure contains a quarter note on Bb0, a quarter note on Ab0, and a quarter note on G0. The eighth measure consists of a half note on F0 and a quarter note on E0. The staff ends with a double bar line.

53

Musical notation for measures 53-54, bass clef, 3/4 time, key of B-flat major. Measure 53 starts with a bass clef and a 3/4 time signature. The melody consists of quarter notes: B-flat, C, D, E, F, G, A, B-flat. Measure 54 continues with quarter notes: C, D, E, F, G, A, B-flat, C. A fermata is placed over the final B-flat note in measure 54.

54

Musical notation for measures 55-56, treble clef, 3/4 time, key of B-flat major. Measure 55 starts with a treble clef and a 3/4 time signature. The melody consists of quarter notes: B-flat, C, D, E, F, G, A, B-flat. Measure 56 continues with quarter notes: C, D, E, F, G, A, B-flat, C. A fermata is placed over the final B-flat note in measure 56.

55

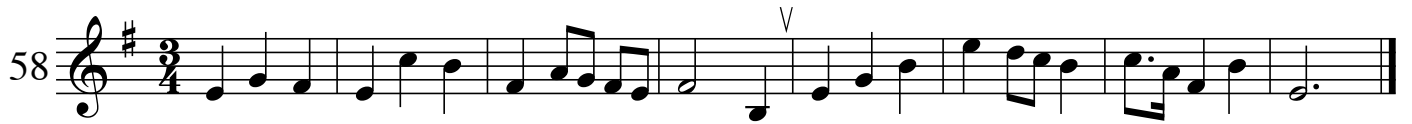
Musical notation for measures 57-58, treble clef, 3/4 time, key of D major. Measure 57 starts with a treble clef and a 3/4 time signature. The melody consists of quarter notes: D, E, F#, G, A, B, C#, D. Measure 58 continues with quarter notes: E, F#, G, A, B, C#, D, E. A fermata is placed over the final D note in measure 58.

56

Musical notation for measures 59-60, treble clef, 3/4 time, key of B-flat major. Measure 59 starts with a treble clef and a 3/4 time signature. The melody consists of quarter notes: B-flat, C, D, E, F, G, A, B-flat. Measure 60 continues with quarter notes: C, D, E, F, G, A, B-flat, C. A fermata is placed over the final B-flat note in measure 60.

57

Musical notation for measures 61-62, treble clef, 3/4 time, key of B-flat major. Measure 61 starts with a treble clef and a 3/4 time signature. The melody consists of quarter notes: B-flat, C, D, E, F, G, A, B-flat. Measure 62 continues with quarter notes: C, D, E, F, G, A, B-flat, C. A fermata is placed over the final B-flat note in measure 62.

58 

59 





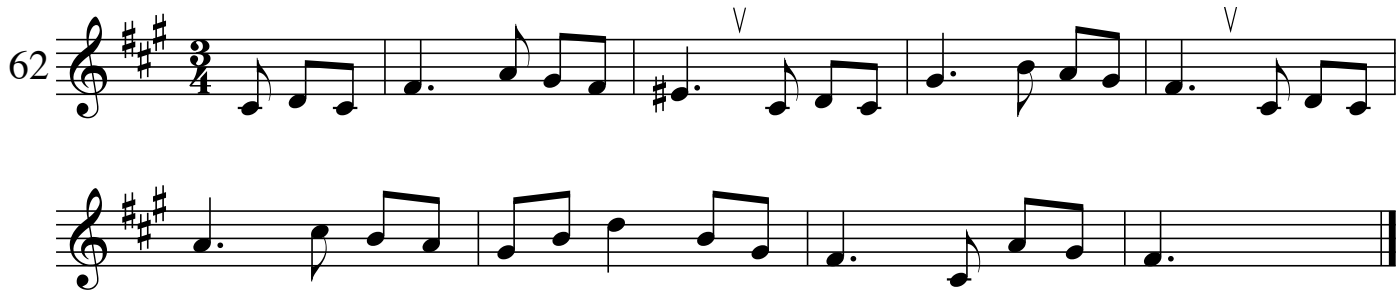
60 





61 




62  Musical notation for measures 62-63. Measure 62 is in 3/4 time with a key signature of three sharps (F#, C#, G#). Measure 63 is in common time (C) with a key signature of three flats (Bb, Eb, Ab). Both measures feature a melodic line with a 'V' marking above the staff.

63  Musical notation for measure 63, continuing from the previous system. It is in common time (C) with a key signature of three flats (Bb, Eb, Ab). A 'V' marking is present above the staff.

64  Musical notation for measures 64-65. Measure 64 is in common time (C) with a key signature of one sharp (F#). Measure 65 is in 2/4 time with a key signature of one flat (Bb). Both measures feature a melodic line with a 'V' marking above the staff.

64  Musical notation for measure 64, continuing from the previous system. It is in common time (C) with a key signature of one sharp (F#). A 'V' marking is present above the staff.

65  Musical notation for measure 65, continuing from the previous system. It is in 2/4 time with a key signature of one flat (Bb). A 'V' marking is present above the staff.

66  Musical notation for measures 66-67. Measure 66 is in common time (C) with a key signature of one sharp (F#). Measure 67 is in 3/4 time with a key signature of two flats (Bb, Eb). Both measures feature a bass line with a 'V' marking above the staff.

66  Musical notation for measure 66, continuing from the previous system. It is in common time (C) with a key signature of one sharp (F#).

67  Musical notation for measure 67, continuing from the previous system. It is in 3/4 time with a key signature of two flats (Bb, Eb). A 'V' marking is present above the staff.

68

3 3 3 3

3 3 3 3 3

69

V

V

70

V

V

V

V



71 Musical staff 71, first line. Treble clef, key signature of two flats (B-flat, E-flat), common time signature. The staff contains a sequence of notes: C4, D4, E4, F4, G4, A4, B4, C5, B4, A4, G4, F4, E4, D4, C4. A repeat sign is placed after the eighth measure.

Musical staff 71, second line. Treble clef, key signature of two flats, common time. The staff contains a sequence of notes: C4, D4, E4, F4, G4, A4, B4, C5, B4, A4, G4, F4, E4, D4, C4. A fermata is placed over the eighth measure.

72 Musical staff 72, first line. Treble clef, key signature of two flats, common time. The staff contains a sequence of notes: C4, D4, E4, F4, G4, A4, B4, C5, B4, A4, G4, F4, E4, D4, C4. A fermata is placed over the eighth measure.

Musical staff 72, second line. Treble clef, key signature of two flats, common time. The staff contains a sequence of notes: C4, D4, E4, F4, G4, A4, B4, C5, B4, A4, G4, F4, E4, D4, C4. A fermata is placed over the eighth measure.

73 Musical staff 73, first line. Treble clef, key signature of three sharps (F#, C#, G#), common time. The staff contains a sequence of notes: C4, D4, E4, F#4, G#4, A4, B4, C5, B4, A4, G#4, F#4, E4, D4, C4. A fermata is placed over the eighth measure.

Musical staff 73, second line. Treble clef, key signature of three sharps, common time. The staff contains a sequence of notes: C4, D4, E4, F#4, G#4, A4, B4, C5, B4, A4, G#4, F#4, E4, D4, C4. A fermata is placed over the eighth measure.

74 Musical staff 74, first line. Bass clef, key signature of two flats, common time. The staff contains a sequence of notes: C3, D3, E3, F3, G3, A3, B3, C4, B3, A3, G3, F3, E3, D3, C3. A fermata is placed over the eighth measure.

Musical staff 74, second line. Bass clef, key signature of two flats, common time. The staff contains a sequence of notes: C3, D3, E3, F3, G3, A3, B3, C4, B3, A3, G3, F3, E3, D3, C3. A fermata is placed over the eighth measure.

Musical staff 74, third line. Bass clef, key signature of two flats, common time. The staff contains a sequence of notes: C3, D3, E3, F3, G3, A3, B3, C4, B3, A3, G3, F3, E3, D3, C3. A fermata is placed over the eighth measure.

75 

76 



77 



78 



79 



80 



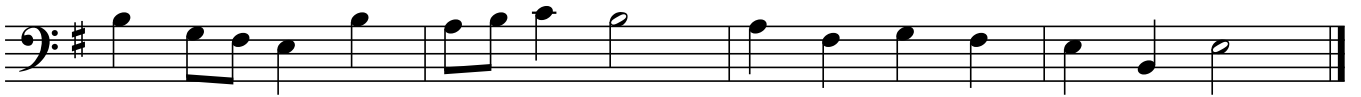


81 





82 



83 



84

Musical notation for measures 84 and 85 in bass clef, common time, B-flat major. Measure 84 contains a half note G2, quarter notes F2, E2, D2, C2, B1, A1, G1, and a half note G1 with a fermata. Measure 85 contains quarter notes G1, F1, E1, D1, C1, B0, A0, G0, quarter notes F0, E0, D0, C0, B0, A0, G0, and a half note G0 with a fermata.

85

Musical notation for measures 85 and 86 in bass clef, common time, B-flat major. Measure 85 contains quarter notes G1, F1, E1, D1, C1, B0, A0, G0, quarter notes F0, E0, D0, C0, B0, A0, G0, and a half note G0 with a fermata. Measure 86 contains quarter notes G0, F0, E0, D0, C0, B0, A0, G0, quarter notes F0, E0, D0, C0, B0, A0, G0, and a half note G0 with a fermata.

86

Musical notation for measures 86 and 87 in treble clef, common time, B-flat major. Measure 86 contains a half note G4, quarter notes F4, E4, D4, C4, B3, A3, G3, and a half note G3 with a fermata. Measure 87 contains quarter notes G3, F3, E3, D3, C3, B2, A2, G2, quarter notes F2, E2, D2, C2, B1, A1, G1, and a half note G1 with a fermata.

87

Musical notation for measures 87 and 88 in treble clef, common time, D major. Measure 87 contains quarter notes D4, C4, B3, A3, G3, F3, E3, D3, quarter notes C3, B2, A2, G2, F2, E2, D2, and a half note D2 with a fermata. Measure 88 contains quarter notes D2, C2, B1, A1, G1, F1, E1, D1, quarter notes C1, B0, A0, G0, F0, E0, D0, and a half note D0 with a fermata.

88

Musical notation for measures 88-90 in G major, 3/4 time. Measure 88: G4, A4, B4, C5, B4, A4, G4, F#4, E4, D4. Measure 89: D4, C4, B3, A3, G3, F#3, E3, D3. Measure 90: C4, B3, A3, G3, F#3, E3, D3. A 'V' (breath mark) is placed above the first note of measure 88.

89

Musical notation for measures 89-90 in G major, 3/4 time. Measure 89: D4, C4, B3, A3, G3, F#3, E3, D3. Measure 90: C4, B3, A3, G3, F#3, E3, D3. A 'V' (breath mark) is placed above the first note of measure 90.

90

Musical notation for measures 90-91 in G major, 3/4 time. Measure 90: C4, B3, A3, G3, F#3, E3, D3. Measure 91: C4, B3, A3, G3, F#3, E3, D3. A 'V' (breath mark) is placed above the first note of measure 90.

91

Musical notation for measures 91-92 in G major, 3/4 time. Measure 91: C4, B3, A3, G3, F#3, E3, D3. Measure 92: C4, B3, A3, G3, F#3, E3, D3. A 'V' (breath mark) is placed above the first note of measure 91.

92

Musical notation for measures 92-93 in Treble Clef, 2/4 time signature, and a key signature of three flats. Measure 92 contains two measures of music with eighth-note patterns and beamed sixteenth notes. Measure 93 contains two measures of music, ending with a repeat sign. A fermata is placed over the final note of the second measure of measure 93.

93

Musical notation for measures 93-94 in Bass Clef, 2/4 time signature, and a key signature of three flats. Measure 93 contains two measures of music with eighth-note patterns. Measure 94 contains two measures of music, ending with a repeat sign. A fermata is placed over the final note of the second measure of measure 94.

94

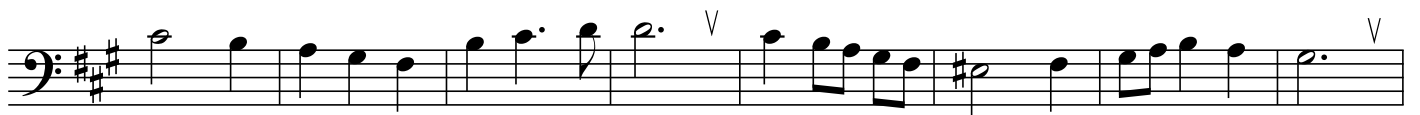
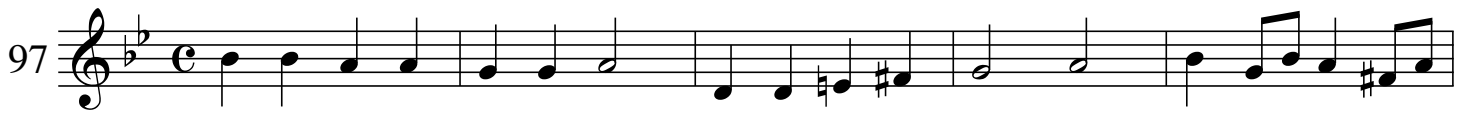
Musical notation for measures 94-95 in Bass Clef, 2/4 time signature, and a key signature of three flats. Measure 94 contains two measures of music with eighth-note patterns. Measure 95 contains two measures of music, ending with a repeat sign. A fermata is placed over the final note of the second measure of measure 95.

95

Musical notation for measures 95-96 in Bass Clef, 2/4 time signature, and a key signature of two sharps. Measure 95 contains two measures of music with eighth-note patterns. Measure 96 contains two measures of music, ending with a repeat sign. A fermata is placed over the final note of the second measure of measure 96.

96

Musical notation for measures 96-97 in Treble Clef, 2/4 time signature, and a key signature of three flats. Measure 96 contains two measures of music with eighth-note patterns. Measure 97 contains two measures of music, ending with a repeat sign. A fermata is placed over the final note of the second measure of measure 97.



100

Musical notation for measures 100-101 in bass clef, 3/4 time, key of D major. Measure 100 starts with a bass clef, key signature of two sharps (D major), and 3/4 time signature. It contains a sequence of eighth and quarter notes. Measure 101 continues the sequence and ends with a fermata over a half note. A 'V' marking is above the final note of measure 101.

101

Musical notation for measure 101 in treble clef, common time, key of B-flat major. Measure 101 starts with a treble clef, key signature of two flats (B-flat major), and common time signature. It contains a sequence of quarter and eighth notes. A 'V' marking is above the fifth measure. The measure ends with a fermata over a half note.

102

Musical notation for measures 102-103 in treble clef, 2/4 time. Measure 102 starts with a treble clef and 2/4 time signature. It contains a sequence of eighth and quarter notes. Measure 103 continues the sequence and ends with a fermata over a half note.

103

Musical notation for measures 103-104 in treble clef, common time, key of B-flat major. Measure 103 starts with a treble clef, key signature of two flats (B-flat major), and common time signature. It contains a sequence of quarter and eighth notes. A 'V' marking is above the final note. Measure 104 continues the sequence and ends with a fermata over a half note.

104

Musical notation for measures 104-105 in treble clef, 3/4 time, key of B-flat major. Measure 104 starts with a treble clef, key signature of two flats (B-flat major), and 3/4 time signature. It contains a sequence of quarter and eighth notes. A 'V' marking is above the final note. Measure 105 continues the sequence and ends with a fermata over a half note.